

**PHENOLIC**

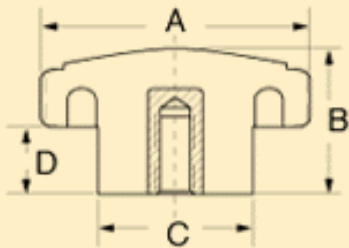
more knurled clamping knobs >>

**Material-** Call for material specifications  
**Insert-** Brass  
**Projecting Stud-** Steel, zinc plated

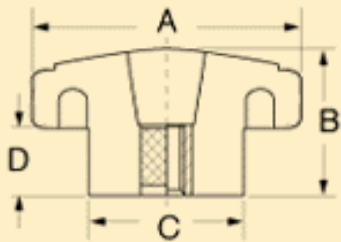
**KNURLED CLAMPING**



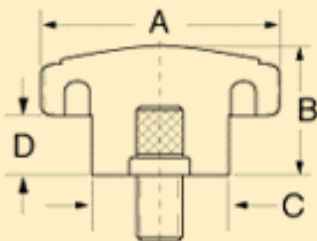
Threaded Insert



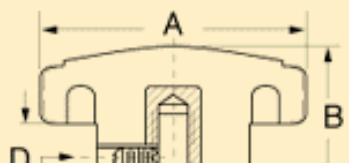
Threaded Insert Thru Hole



Projecting Stud



Threaded Insert w/Slotted Set Screw



Threaded Insert

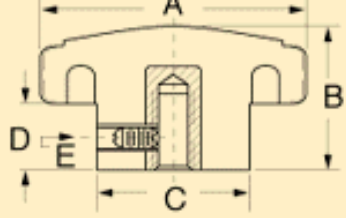
Part No.	Insert	
	Thread	Depth
3065-B	8-32	1/4
3065-D	10-32	5/16
3065-E <sup>1</sup>	1/4-20	3/8
1 "B" = 3/4, "D" = 3/8		

Projecting Stud

Part No.	Stud		Max Length
	Thread	Length	
3065-F	10-32	1/2	3
3065-H	1/4-20	9/16	3
3065-J	5/16-18	3/4	3

Hole or Bushing w/ Set Screw

Part No.	Hole		SS	"E"
	Dia.	Type		
3065-A*	1/4	Plain Hole		
3065	1/4	Plain Hole	8-32	17/64



BB- Brass Bushing  
PH- Plain Hole  
\*1/4" "D" Shaft with spring

[← back](#)